



# How to Read Your Meter and Submit a Self-Read

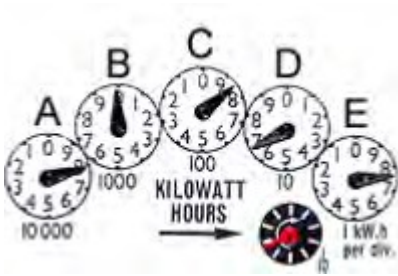
You may be required to read your electricity meter yourself and submit this to LPE. This guide will explain how to do this.



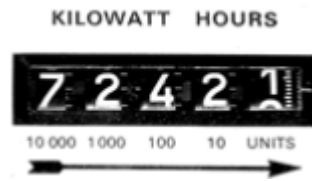
# HOW TO READ YOUR METER

There are several different types of meters, identify yours from the images below and read the corresponding information.

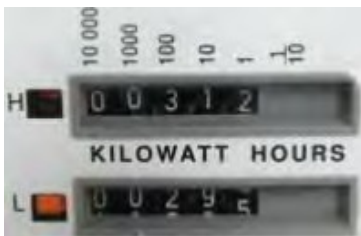
Clock face (pointer) meters  
See Page 3



Digits (cyclometer) display meters - single rate  
See Page 3



Digits (cyclometer) display meters - dual rate  
See Page 4



Electronic digital display meters  
See Page 4



## SOLAR METERS (INVERTER ENERGY SYSTEM METERS)

If you have a solar meter, the meter model type is displayed on the front panel label on the front of the meter. The digital display has two sections, the Display ID (or code) and the Display Data (or the actual reading).

There's no need to push any buttons on the meter to obtain the reading. A test screen will initially display as a series of 8s. This will ensure the digital display is working correctly.

EM1000 Meter - meter used for single tariff installations (Tariff 11 or 20) See Page 5



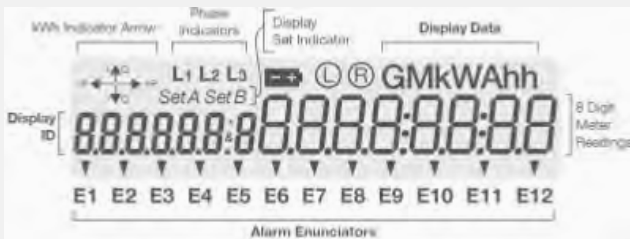
EM1200 Meter - meter used for two tariff installations (Tariff 11, 33 or 31)

See Page 6



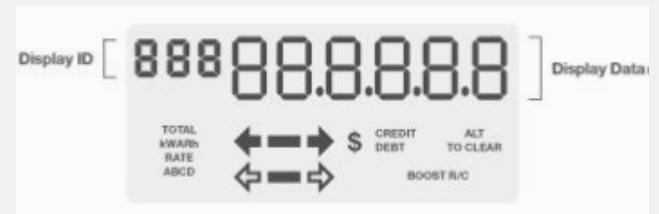
MK 10 Meter - multipurpose installations (Tariff 11, 20, 22 or 62)

See page 7



Q4 Meter - multipurpose installations (Tariff 11, 20, 22 or 62)

See page 8

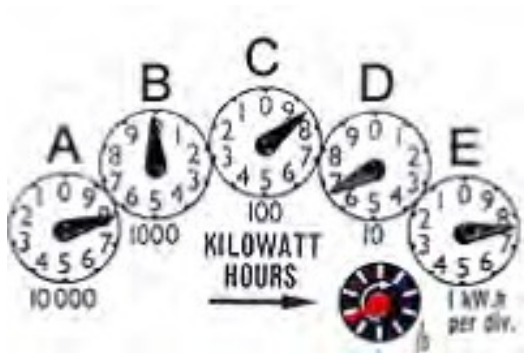


## CLOCK FACE (POINTER) METERS

A clock face meter has up to six clock faces. The clock faces have numbers 0 to 9 and alternate between rotating clockwise and anti-clockwise.

Start reading from the left hand dial (A) and read each dial in succession to the right. When a dial hand points between two numbers, write down the lower of the two numbers. If it points between 0 and 1 write down 0 and if it points between 9 and 0 write down 9.

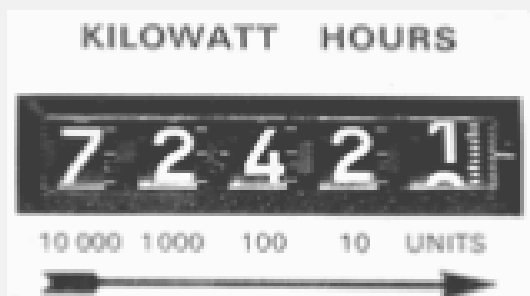
When a dial hand appears to be exactly on a number, as with dial (A), look at the next dial to the right to see if it has passed zero. If the next dial has not passed zero, as with dial (B), then the reading for the first dial is the lower number. In this example the reading for dial (A) is 7.



In this example the reading is 7 - 0 - 8 - 6 - 7.

## DIGITS (CYCLOMETER) DISPLAY METERS - SINGLE RATE

This meter gives a direct readout of the total amount of electricity used. Read the numbers in the same sequence as shown on the meter.

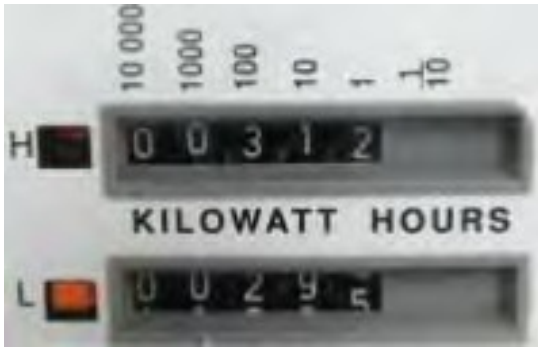


In this example the reading is 7 - 2 - 4 - 2 - 1.

## DIGITS (CYCLOMETER) DISPLAY METERS - DUAL RATE

These meters are similar to the Single Rate Digits (Cyclometer) Display Meters but with a dual display.

First, record the reading for the top display, followed by the reading for the bottom display.



In this example, the meter shows two displays - H (High/Peak) and L (Low/Off Peak).

Note some meters may have the H and L displays reversed.

The reading for this example is

H 0 - 0 - 3 - 1 - 2

L 0 - 0 - 2 - 9 - 5

## ELECTRONIC DIGITAL DISPLAY METERS

This meter automatically cycles through the various meter readings. It's not necessary to press any buttons to read this meter, simply wait and watch as the various meter readings appear.

If a reading is missed simply wait and it will be displayed again. Enter all readings in the boxes provided.

This meter will also display readings for 'test', 'date', 'time' and 'program ID'. Enter all of these readings in the boxes provided as well.

If 'error codes E and F' appear then there's a problem with the meter. Please report these codes on the meter reading sheet



In this example the reading is 0 - 0 - 4 - 7 - 6 - 3.

## EM1000 METER - METER USED FOR SINGLE TARIFF INSTALLATIONS (TARIFF 11 OR 20)



DISPLAY DATA	DISPLAY ID	EXPLANATION OF READING
Display Test Screen	ABCD	The test displays first as a series of 8s
Total Import kWh (from electricity distributor)	(Blank)	Energy (kWh) used from the electricity network
Total Export kWh (excess to electricity distributor)	-	Excess energy (kWh) sent back to the electricity network (occurs when appliance usage is less than energy generated by the solar panels)

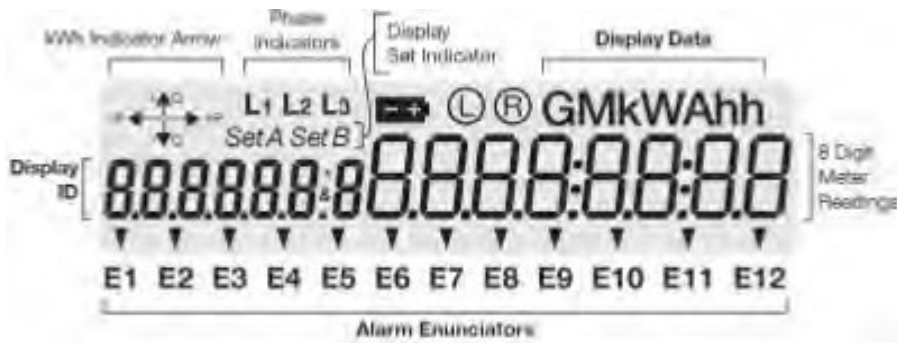
## EM1200 METER - METER USED FOR TWO TARIFF INSTALLATIONS (TARIFF 11, 33 OR 31)



DISPLAY DATA	DISPLAY ID	EXPLANATION OF READING
Display Test Screen	88	The test displays first as a series of 8s
Date	02	Present date
Time	03	Present time
Rate A kWh Element 1 (Peak) *Only applicable if primary tariff is time of use, e.g., T62 or T22	04*	Energy (kWh) used from the electricity network between 7am-9pm Monday-Friday - High Rate
Rate C kWh Element 1 (Of Peak) *Only applicable if primary tariff is time of use, e.g., T62 or T22	05*	Energy (kWh) used from the electricity network between 9pm-7am Monday-Friday and all weekend - Low Rate
Total Import kWh Element 1 (from electricity distributor)	06	Energy (kWh) used from the electricity network on primary tariff (e.g., Tariff 11) Sum of 04 & 05 if applicable
Total Export kWh Element 1 & Element 2 (excess to electricity distributor)	07	Excess energy (kWh) sent back to the electricity network (occurs when appliance usage is less than energy generated by the solar panels)
Total Import kWh Element 2 (from electricity distributor)	09	Energy (kWh) used on secondary tariff (i.e., Tariff 31 or 33)
Program ID	10	Meter program number - electricity distributor use only

**NOTE:** New EM1200 meters manufactured from 2012 will not have the Test Display or the Date and Time displays.

# MK 10 METER - MULTIPURPOSE INSTALLATIONS (TARIFF 11, 20, 22 OR 62)



DISPLAY DATA	DISPLAY ID	EXPLANATION OF READING
Display Test Screen	888	The test displays first as a series of 8s
Date	001	Present date
Time	002	Present time
Total kWh (from electricity distributor)	003	Total energy (kWh) used from the electricity network. Equals sum of 004, 005 and 006
Rate A kWh (from electricity distributor)	004	Energy (kWh) used from the electricity network between 7am- 9pm Monday-Friday
Rate B kWh (from electricity distributor)	005	Energy (kWh) used from the electricity network between 9pm- 11pm Monday-Friday
Rate C kWh (from electricity distributor)	006	Energy (kWh) used from the electricity network at all other times
Previous Maximum kW	011	Previous demand - electricity distributor use only
Current Cumulative kW	012	Current demand - billing use for demand trials
Current Maximum kW	013	Highest maximum demand recorded since last reset - electricity distributor use only
Demand Reset Count	040	Number of times demand reset - electricity distributor use only
Program ID	042	Meter program number - electricity distributor use only
Alarm	057	Displays alarm code - electricity distributor use only
Total kWh Export (excess to electricity distributor)	114	Excess energy (kWh) sent back to electricity network (occurs when appliance usage is less than energy generated by the solar panels)



# Q4 METER - MULTIPURPOSE INSTALLATIONS (TARIFF 11, 20, 22 OR 62)



DISPLAY DATA	DISPLAY ID	EXPLANATION OF READING
Display Test Screen	888	The test displays first as a series of 8s
Date	001	Present date
Time	002	Present time
Total kWh (from electricity distributor)	003	Total energy (kWh) used from the electricity network. Equals sum of 004, 005 and 006
Rate A kWh (from electricity distributor)	004	Energy (kWh) used from the electricity network between 7am- 9pm Monday-Friday
Rate B kWh (from electricity distributor)	005	Energy (kWh) used from the electricity network between 9pm- 11pm Monday-Friday
Rate C kWh (from electricity distributor)	006	Energy (kWh) used from the electricity network at all other times
Previous Maximum kW	011	Previous demand - electricity distributor use only
Current Cumulative kW	012	Current demand - billing use for demand trials
Current Maximum kW	013	Highest maximum demand recorded since last reset - electricity distributor use only
Demand Reset Count	040	Number of times demand reset - electricity distributor use only
Program ID	042	Meter program number - electricity distributor use only
Total kWh Export (excess to electricity distributor)	114	Excess energy (kWh) sent back to electricity network. Equals sum of 115, 116 and 117
Rate A kWh Export (excess to electricity distributor)	115	Excess energy (kWh) sent back to the electricity network between 7am- 9pm Monday-Friday
Rate B kWh Export (excess to electricity distributor)	116	Excess energy (kWh) sent back to the electricity network between 9pm- 11pm Monday-Friday
Rate C kWh Export (excess to electricity distributor)	117	Excess energy (kWh) sent back to the electricity network at all other times

**NOTE:** Displays 115 – 117 have been discontinued in IES meters manufactured from September 2009.

# How to Submit a Self-Read

If you have received an estimate meter reading on your latest electricity bill, you can submit to us a self-read, so you can be billed for your actual usage.

For further information, please contact us on 1800 040 168 Monday-Friday, 8.30AM – 5.30PM, or email this request to:  
[billing@localityenergy.com.au](mailto:billing@localityenergy.com.au).



1800 040 168

[info@localityenergy.com.au](mailto:info@localityenergy.com.au)

[localityenergy.com.au](http://localityenergy.com.au)



ACN 15 148 958 061AER

EE14005

Locality Planning Energy PTY. LTD.ASX: LPE

Level 8,

8 Market Lane,

Maroochydore QLD 4558